

PART NUMBER	DESCRIPTION	QTY.
ST-RL-3560 PS SIDE	LENGTH: 130-1/4", RL 3560 BED SIDE, PASSENGER	1

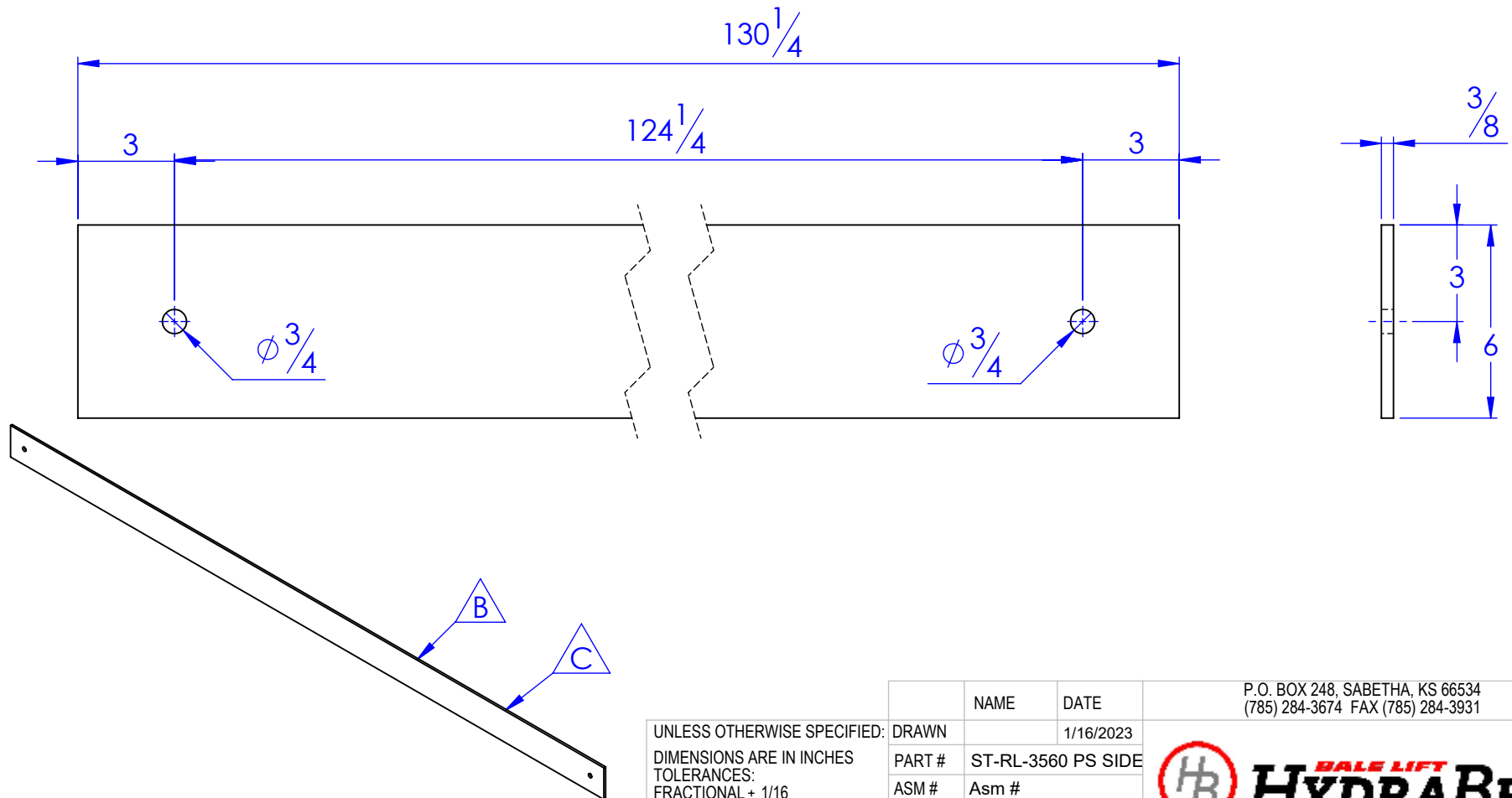
**DRAWING LOCATION:**

M:\Drawings\Ethan\Solidworks drawings\12 REEL LIFT\2X00 VENDOR  
DWG\2200 Floor

**PART LOCATION:**

M:\Drawings\Heath Information\Triple C\STANDARD TC DWG 10-25-11  
SOLID WORKS\SW MODELS\Stock material length\STOCK .375 X 6

REVISIONS			
REV.	DESCRIPTION	DATE	APPROVED
A	INITIAL RELEASE	4/26/2021	
B	REMOVED THE (HD) DESCRIPTION & FP PART NUMBER FROM PFRL-350HD BSP TO STOCK FI .375 X 6 L_154 PS	3/19/2022	HP
C	CHANGED OVERALL LENGTH FROM 154 TO 130-1/4"	3/19/2022	HP
D	REVISED PART # TO ST-RL-3560 PS SIDE FROM FI .375 X 6 L 130.25_PS	1/16/2023	KD (BB)




**PROPRIETARY AND CONFIDENTIAL**

THE INFORMATION CONTAINED IN THIS DRAWING IS THE SOLE PROPERTY OF HYDRABEDS. ANY REPRODUCTION IN PART OR AS A WHOLE WITHOUT THE WRITTEN PERMISSION OF HYDRABEDS IS PROHIBITED.

UNLESS OTHERWISE SPECIFIED:  
DIMENSIONS ARE IN INCHES  
TOLERANCES:  
FRACTIONAL  $\pm 1/16$   
ANGULAR: MACH  $\pm 1$  BEND  $\pm 1$   
TWO PLACE DECIMAL  $\pm .010$   
THREE PLACE DECIMAL  $\pm .005$

MATERIAL FI 3/8x6

DO NOT SCALE DRAWING

	NAME	DATE	P.O. BOX 248, SABETHA, KS 66534 (785) 284-3674 FAX (785) 284-3931			
D: DRAWN		1/16/2023				
PART #	ST-RL-3560 PS SIDE					
ASM #	Asm #					
COMMENTS:						
LENGTH: 130-1/4", RL 3560 BED SIDE, PASSENGER			SIZE	DWG. NO.		REV
			A	12-2260		D
			SCALE: 1:50		WEIGHT: 83.02	SHEET 1 OF 1

